

2011 - FOURTH QUARTER

[www.nespool.org](http://www.nespool.org)

\$16

# THE EDGE

The quarterly publication of the Northeast Spa & Pool Association

*Featuring*  
**Nejame  
& Sons**

of Danbury, CT

*The Pool  
Experts*

**Licensing in Connecticut**

**Stains: Saving cost and Aggravation**

**Enhancing Your Memory**

**Tips for Snowplowing Business**

**Check Your Insurance Coverages**



NORTHEAST SPA & POOL ASSOCIATION



# 30'x60' Vinyl Liner Inground Pool

## Carved into Rocky Slope



**THE INGROUND VINYL** The inground vinyl liner pool and spa project featured here, offers a slide, cave and patio areas. It is located in New Fairfield, Connecticut, which is about six miles north of Danbury.

### **BUILDER**

The project was designed and constructed by NeJame & Sons, LLC, Danbury, CT. Edward NeJame, Sr. went into the swimming pool business from the home improvement industry back in the mid-1960s. Today, Ed's three sons Edward Jr., Tom and Greg are partners in the firm. About 20 years ago, NeJame became an exclusive dealer of Pacific Pools, Latham, New York, a manufacturer of vinyl liner pools and accessories. Today, NeJame is considered one of Pacific Pools' "Showcase Dealers."

In addition to building pools, NeJame has a retail store at 91 South Street in Danbury and an extensive service operation. During the season it has eight two-person crews on the road servicing pools. In addition, it has a pool installation crew of 12-14 people. With the third generation of NeJAMES getting interested in the business, the pool builder will open a new location in Carmel, New York in Putnam County.

### **PROJECT PARAMETERS**

The client for this project in New Fairfield contacted NeJame in 2010 and ultimately selected a 20 x 40-foot inground vinyl-liner Pacific Pool. The client also wanted a spa near the house, a pool house, sitting areas,

fireplace, slide, bar and other add-ons. NeJame was able to deliver everything on the wish list except the pool house. The town in which the pool was constructed has strict ordinances regarding land coverage. The problem is that these ordinances were generated under a storm management plan rather than zoning laws, which means that there is no appeal process and no variance possible.

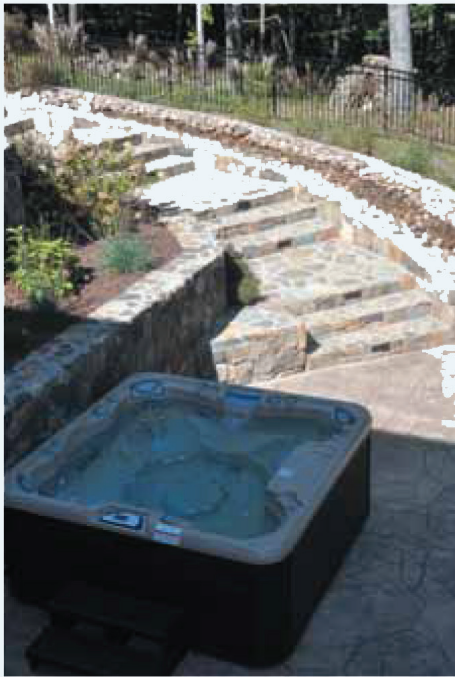
The project got underway earlier this year in 2011, but as the NeJame crew was staking out the pool at the site, the client looked at the 20' x 40' layout and wanted something much larger--a 30' x 60' pool. The inground free-form vinyl liner pool that was selected was a real beauty. It holds about 50,000 gallons of water and is 8.5-feet deep at the deep end and 3.5 at the shallow end. It has Hayward pumps and filtration equipment and a My Blue Pool heat pump. It is currently being fitted for a Pacific Pool safety cover. The water is treated with a Hayward salt generator and it also features ProLogic controls to remotely control the temperature, water features, and lights.

The pool offers a slide that is a pre-engineered fiberglass water park type slide where each piece is individually set and contoured to conform with the slope. There is a stamped concrete deck from the house and around the pool. Coming out of the house, the pool is to the right with steps to different upslope elevations to patio and sitting area on the left hand side of the pool. There is a Sundance Spa close to the house that is separate from the pool. The client has an exercise room in the basement and wanted the spa close enough to use

*Continue next page*

# 30'x60' Vinyl Liner Inground Pool

## Carved into Rocky Slope



*Photos by Caron NeJame*

even in the coldest southern New England weather.

There is a beautiful field stone wall on the far side of the pool from the house. “It is a raised wall that is supported by an I-beam support structure provided by Pacific Pools,” said Tom NeJame, one of the partners in the firm. “All the weight of the wall is on the I-beam support structure, not on the wall of the pool itself. The wall does not go all the way around the pool; it is just in one section. We built the pool up into the slope of the land and then we also built a cave. Water flows off of the top of the cave, which makes it like a grotto. This way, the children and anyone else can swim in there as the water spills over the rock.”

“There is a fireplace and a bar in this expansive project,” he notes. “There is an actual waterfall/river that runs from the elevation of the pool, which is on the first level of the house, down to the spa. The spa is on a lower level where the exercise room is located.”

The pool and spa equipment are off to the side of the property well away from the pool complex and behind boulders. It is also away from the sitting areas and relaxation areas to minimize any noise effect. The heat pump is located where the other equipment is.

The spa heater is separate from the pool/heat pump system. The spa has an electric heater, and while that might conger up a vision of pricey heating bills in this

climate, it does not. The spa and top are fully insulated and Tom NeJame estimates that it costs about \$40 a month for heating.

### CHALLENGES

The major challenge of this pool was a solid rocky ledge in the back of the house that sloped up away from the house. The entire pool excavation had to be undertaken with a hydraulic hammer, which took about a week of hammering. NeJame runs into a lot of rock in this area of Connecticut and had identified the condition prior to starting the job. “The major challenge of the job was getting the pool to nestle into the slope, but also dealing with the hammer work on the rock. We did not want to end up with a big pit on the upside of the pool so we cut the rock in such a way that it was bi-leveled into patios. We also wanted the slide to mold into the slope as much as possible. The slide was constructed in several pieces and it was engineered according to the slope of the ground,” he said.

When NeJame started in the business and for many years, it built a wide variety of pools including gunite and one-piece fiberglass. “When we joined Pacific Pools 20 years ago, we went exclusively with it,” said Tom. “These Pacific Pools are specifically designed

*Continue next page*



and engineered for the harsh winters of New England. Because of that we have been highly successful. We have done hundreds if not thousands of Pacific Pools over the years.”

What if someone comes into the store and wants a gunite pool? “I don’t think gunite pools are bad,” said NeJame, “but they don’t have the features that this system has for New England. My job is to get customers to understand the realities of New England inground pools.

“We have not only developed great expertise in installing Pacific Pools, we were also involved in the evolution of the Pacific product. We were part of the program in helping to design a New England inground pool.”

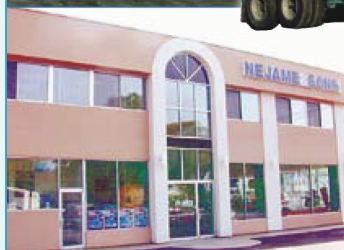
What is the difference between a New England inground pool and an inground pool for warmer regions of the country? Tom says it is the freeze-thaw condition associated with New England. It is not just one freeze and one thaw, it is multiple freeze-thaws here throughout the winter. That makes for a very challenging structure that you have to build. That is where the Pacific system works extremely well. Then on the softer side, just using the pool the kids are not scrapping their noses and toes on concrete. H explains that what Pacific and NeJame are offering is today’s technology in building. “They used to make airplanes out of wood,” he said.”Now they make them out of a strong composite material. I feel a lot more comfortable flying in an airplane using today’s technology than a wooden airplane.”

# NEJAME & SONS

**Danbury’s Original & Only  
Nejame Family Owned Pool Company  
Since 1921**

The Nejame family started serving the Connecticut and New York Community in 1921 at its current location. We are a fourth-generation family-owned business that has grown into one of the largest pool builders in the nation.

Our pools have been featured in numerous industry and national publications and we’ve won more than 30 industry design awards. With more than 85 years in business, 50+ in the swimming pool industry, and 5,000+ pools installed in the Connecticut and New York region. Our customers know and trust Nejame & Sons. Our ideas helped shape the many ways New England pool products are produced today. Nejame & Sons also offers custom pool design services and spas and we are a full service pool and spa company.



**SOUTH STREET’S  
NEJAME & SONS**

91 SOUTH STREET, DANBURY CT 06810

(203) 743-HOME (4663)

[www.mypoolscool.com](http://www.mypoolscool.com)